

Building Community Resilience to Disaster: Lessons Learned from Community-based Initiatives

Malcolm Williams, PhD, MPP

March 18, 2014



HEALTH

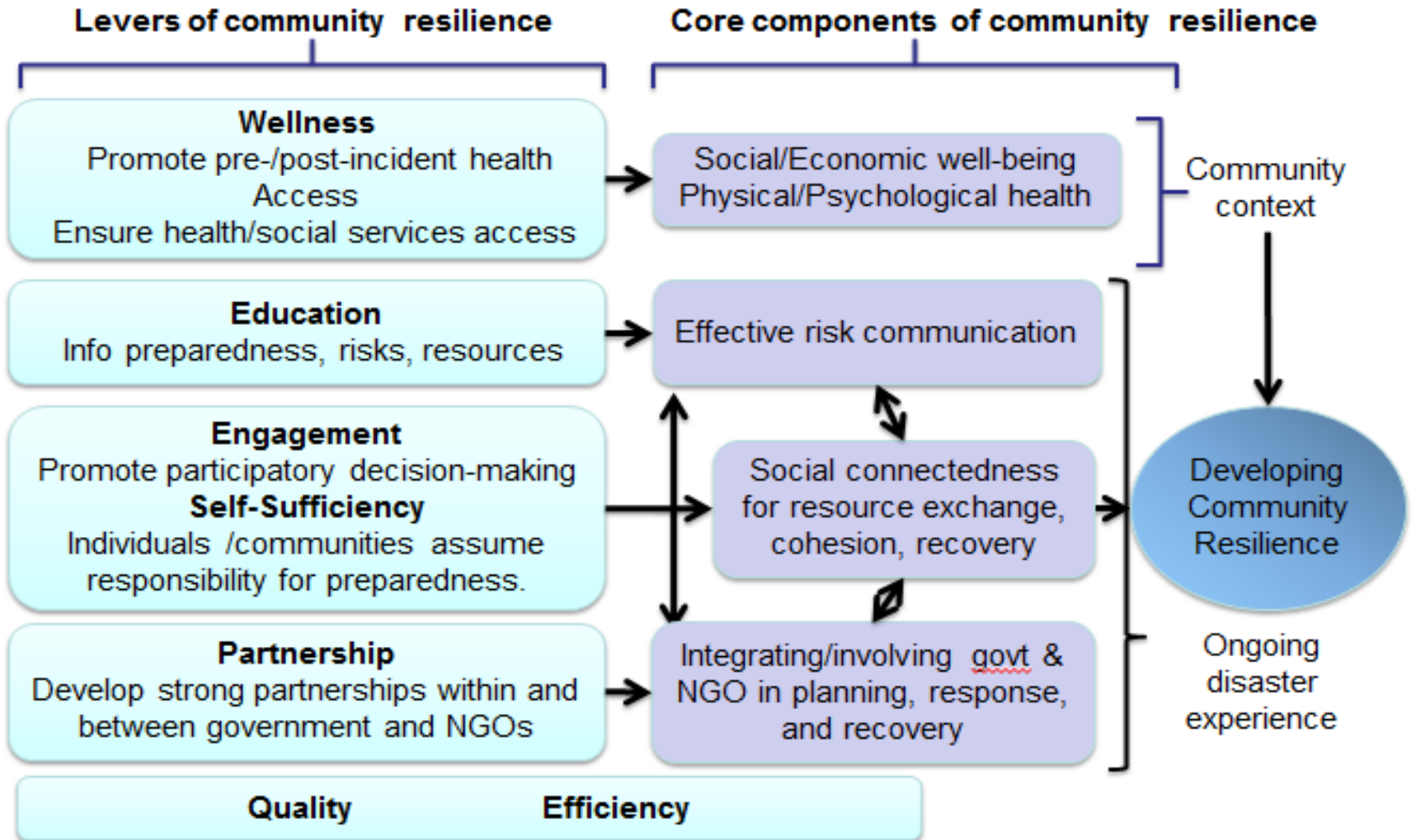
Community Resilience

Definition Developed with Communities (2008-2010):

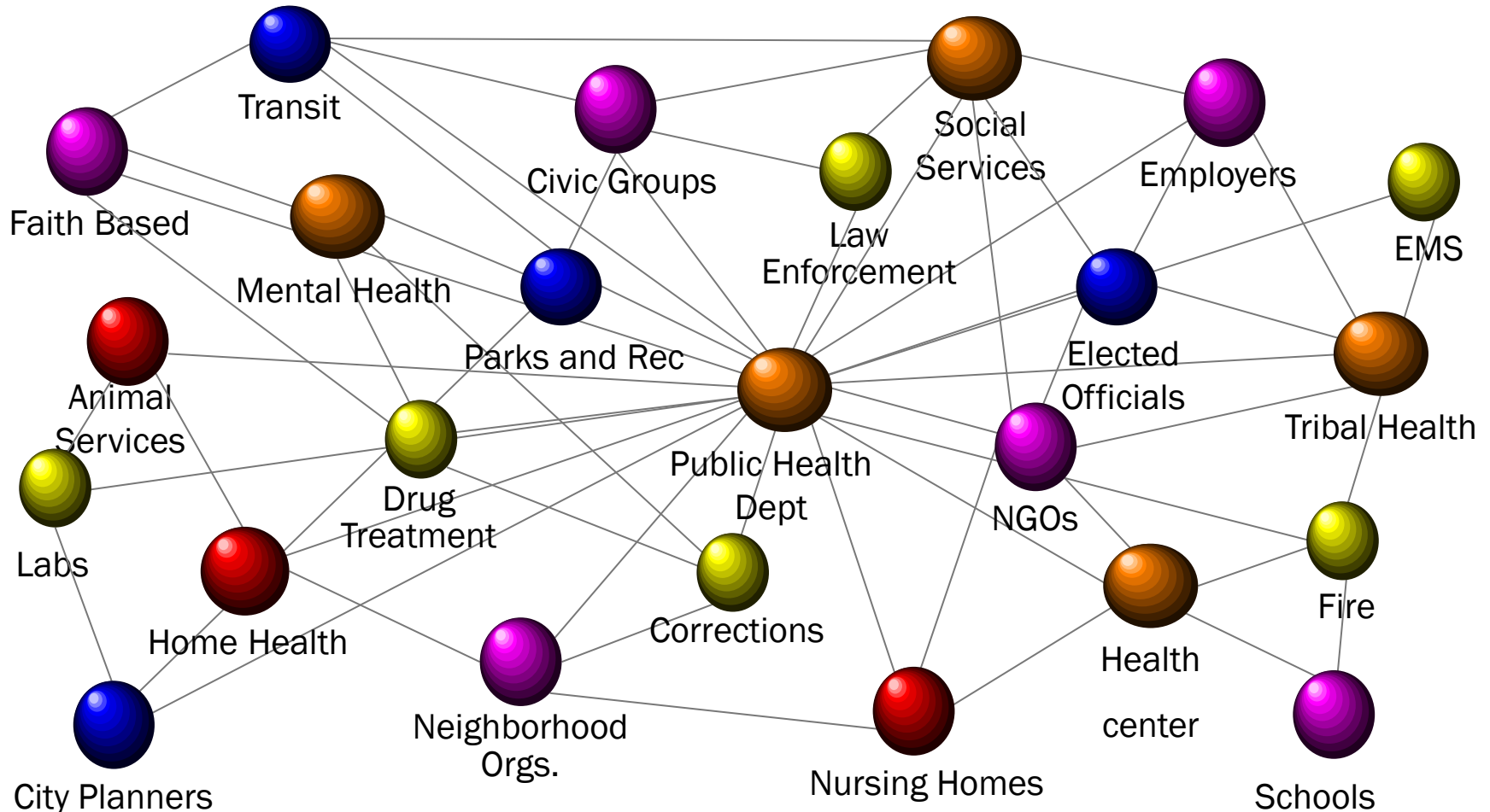
The ongoing and developing capacity of the community to account for its vulnerabilities and develop capabilities that aid in:

1. preventing, withstanding, and mitigating the stress of a health incident;
2. recovering in a way that restores the community to a state of self-sufficiency and at least the same level of health and social functioning after a health incident; and
3. using knowledge from a past response to strengthen the community's ability to withstand the next health incident

Elements of Community Resilience



Community resilience acknowledges the intersection between individuals and organizations



Resilience building combines key features of preparedness and community well-being promotion

Emergency
preparedness

*Community resilience
building*

Community
well-being
promotion

Determining costs across disaster continuum

Emergency



Los Angeles County Community Disaster Resilience

beredyla.org

**KNOW
YOUR
NEIGHBORS**

**PLAN
TOGETHER**

BE READY

**Being prepared for an emergency
begins with "Hello."**



Learn more at beredyla.org



Close X

LACCDR is about moving from just “me” to include “we”

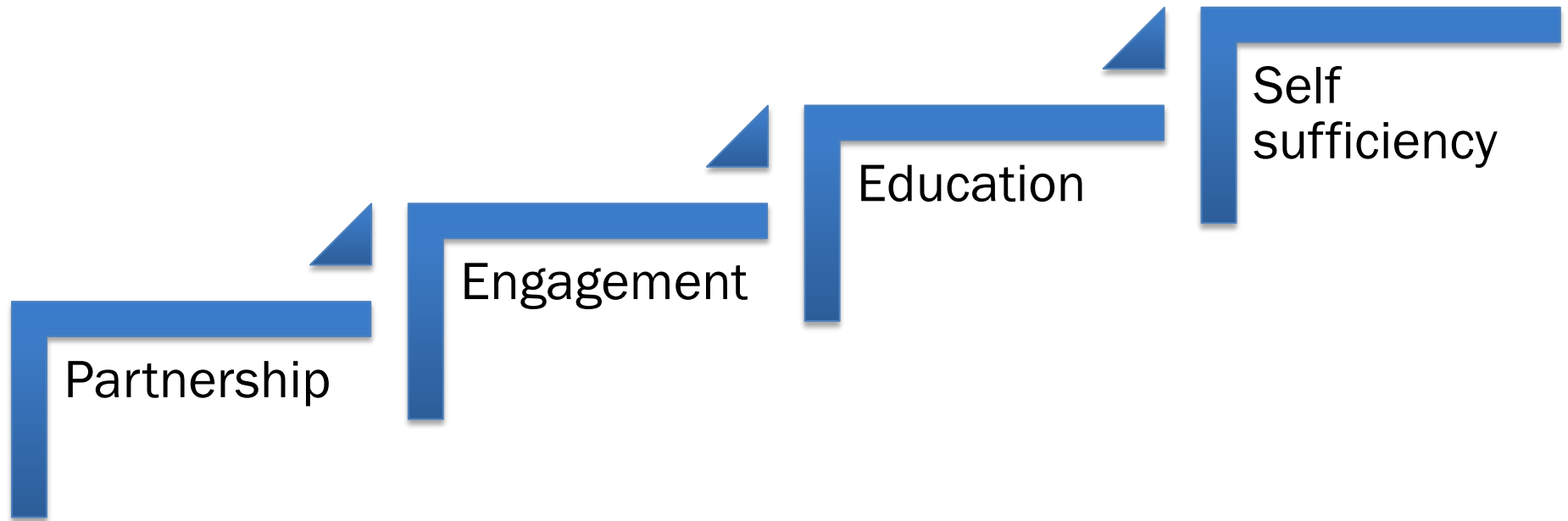
Individual Resilience

- Emergency kits
- Emergency plans
- Individual education and training
- Individual stockpiles
- Individual/household oriented messages

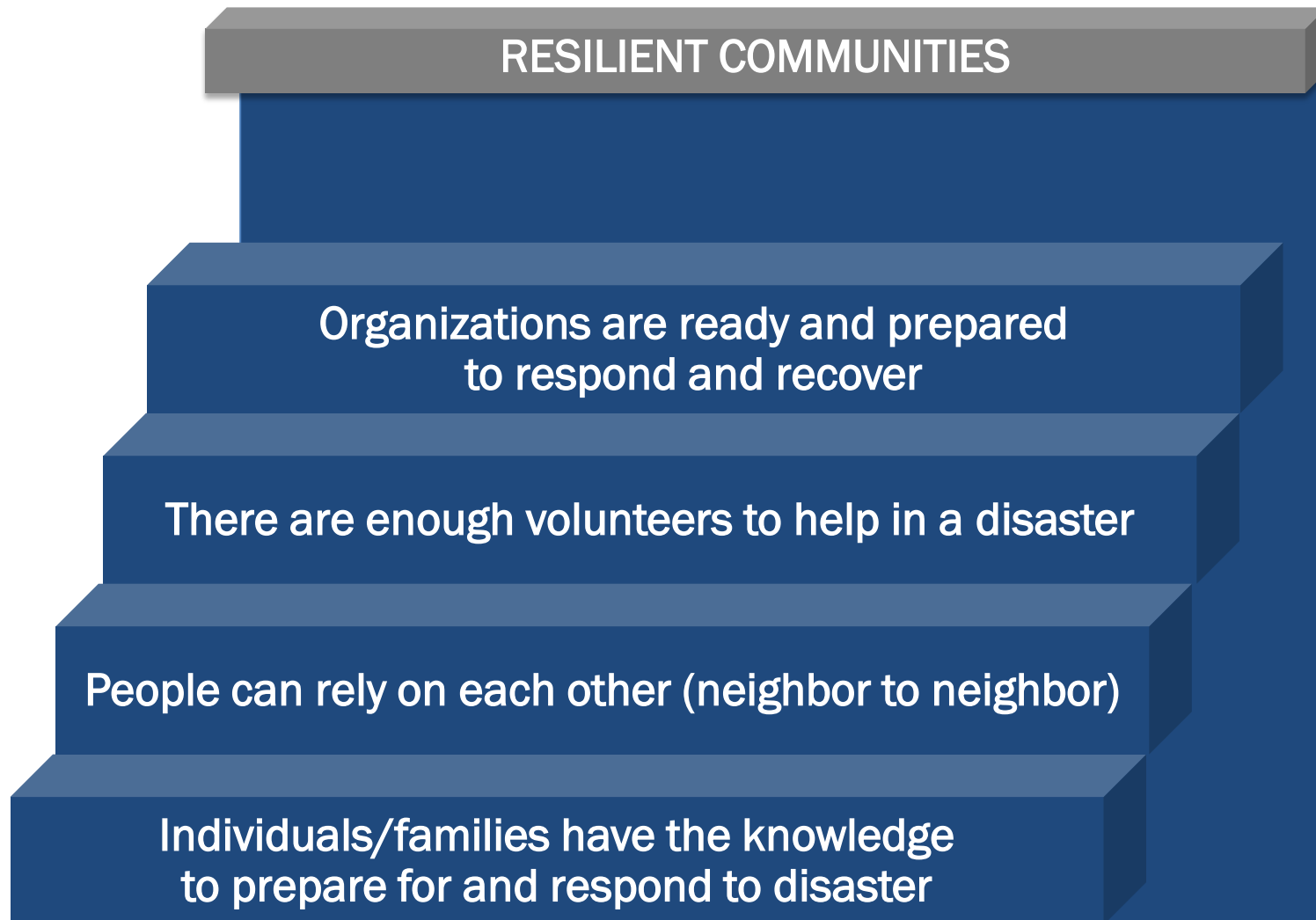
Community Resilience

- Assessing and addressing community vulnerabilities
- Developing community partnerships
- Community training, education, and engagement
- Community preparedness networks/Social connections

LACCDR tests four levers of RAND's eight community resilience levers



Neighbor to neighbor reliance, organizational readiness low in Los Angeles County

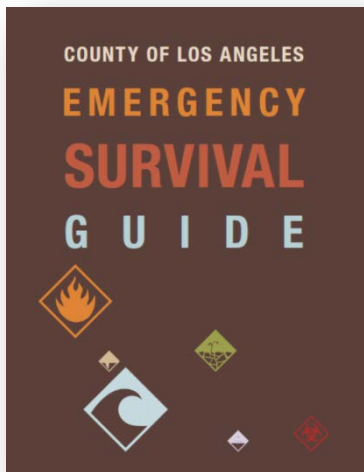


Community resilience requires building neighbor to neighbor reliance and organizational connection



We have begun the comparison of preparedness only vs. resilience communities

- 16 Los Angeles County Neighborhoods (8 Preparedness, 8 Resilience)



Usual Preparedness

Usual coalition with traditional emergency planners

Use of preparedness tools (e.g., “brown book”)



Community Resilience

Resilience Team with diverse array of community organizations

Use of community resilience toolkit

Concerted focus on vulnerable populations

Use of enhanced asset mapping tools

What's next for the community resilience agenda?

- Benchmarks and costs of human recovery
 - How long and why?
 - Who is responsible?
 - Money in resilience or recovery?
- “Response reliability” of NGOs
- Use of social media



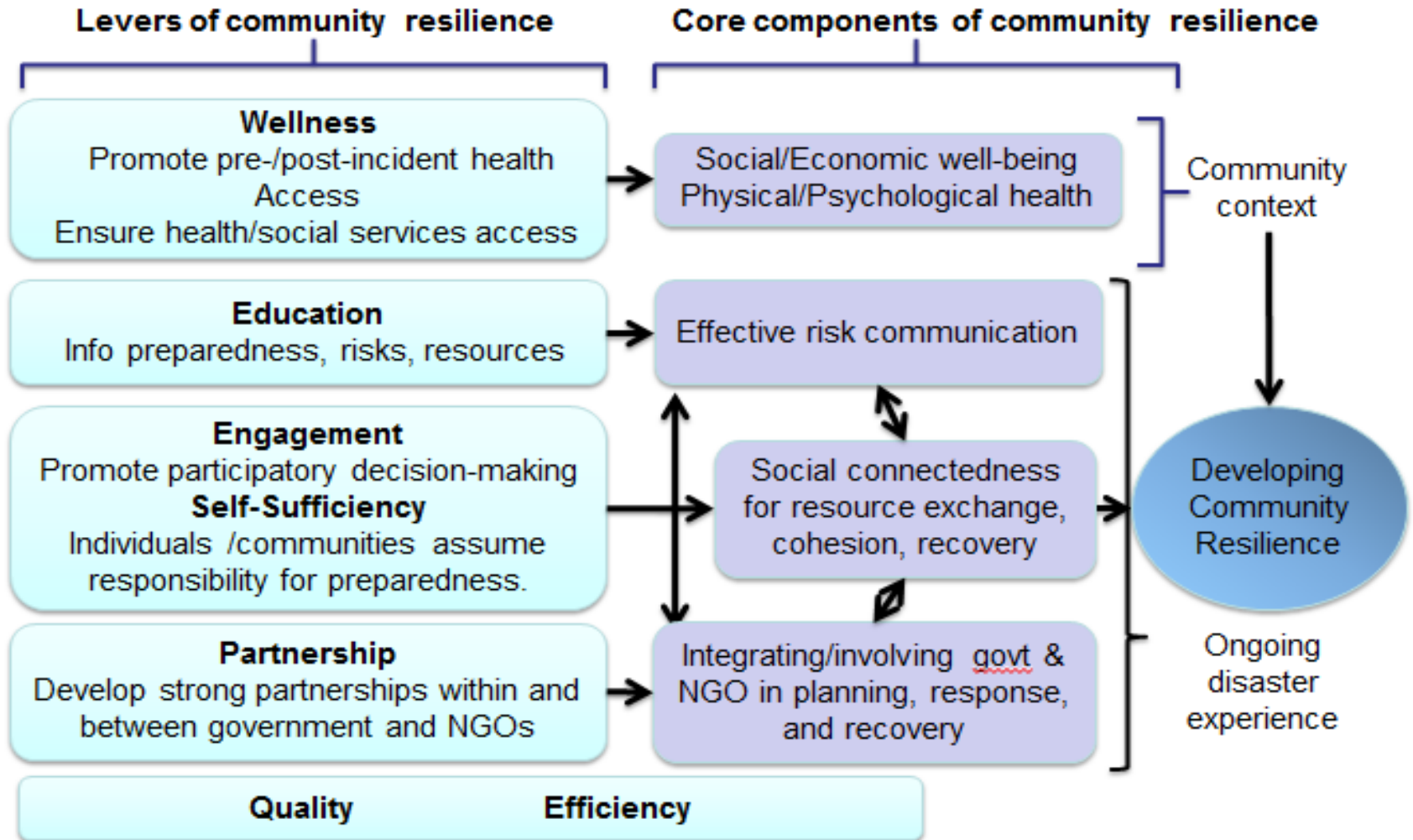
What's next for the community resilience agenda?

- Dual benefit of disaster resilience and health, economic and social system improvement



100 RESILIENT CITIES
CENTENNIAL CHALLENGE

Leverage Points for Funders



Opportunities for Donors and Grantmakers

- Funding:
 - New coalitions (current and future activities)
 - Cross county collaboration through ENLA
- Neutral convener:
 - Convene stakeholders to discuss lessons from LA and other communities
 - Bring new voices to the discussion in both governmental and nongovernmental sectors
- Expertise
 - Business, advocacy, social and health services